

The ultimate tool . . .

Product Specifications

Features	FlexoCAM
▼ Media	
Any flexo plate - Flat or In The Round	✓
Printed copy (visual perception readings), film and film lamination	✓
▼ Dot Evaluation	
Halftone dots: 65 lpi - 180 lpi	✓
Accuracy ± 1% over full range of readings	✓
Plate and dot analysis	✓
Geometric measurements	✓
▼ Interface	
Numeric %-display	✓
Dynamic graphic display	✓
Screen angle / ruling calculation	✓
High speed USB link	✓
Positive (negative for film) reading	✓
▼ Optical Range	
Field of view typically from 1.25 x 0.92 mm (at min zoom) to 0.50 x 0.40 mm (at max zoom)	✓
Zoom range (optical magnification) typically 2.8x - 7.0x	✓
Screen magnification typically 160x - 400x	✓
▼ Connectivity & Storage	
FCP file format, JPEG and BMP	✓
Direct application interface (RIPs, spreadsheets, etc)	✓
▼ Light Source	
Co-axial and Radial white light LED	✓
Variable reflective	✓
Powered from separate power supply	✓

(Specification subject to change without notice)

Technical Specifications

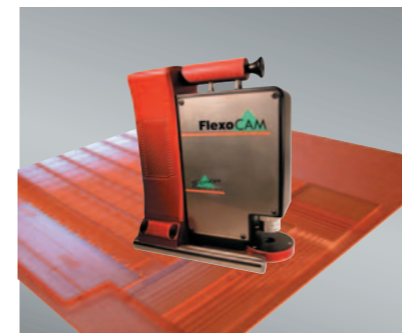
Features	FlexoCAM
▼ Electronics	
Full 24 bit colour RGB camera with 640 x 480 pixel resolution.	✓
USB Control via PC	✓
Additional external ac power supply	✓
▼ Dimensions	
FlexoCAM: 19 x 15.5 x 9.5 cm (W x D x H)	✓
FlexoCAM Case: 37 x 30 x 17.5 cm (W x D x H)	✓
▼ Weight	
FlexoCAM: 2.20 kg (5.0 lbs)	✓
FlexoCAM with Case: 5 kg (11.0 lbs)	✓
▼ Environmental conditions	
Temperature: 16° - 32° C (60° - 90° F)	✓
Humidity: 40% - 60%, non-condensing	✓
▼ Minimum PC-requirements	
Pentium III, 256 MB RAM, 1024 x 768, 24-bit Display, USB 1.1	✓
▼ Operating Systems	
Windows XP / WIN 2000	✓
▼ Warranty	
12 months return to base. Software upgrades FOC for 12 months.	✓

(Specification subject to change without notice)

from Film/Masks



to Plate



and Sleeve



to Printed Media



for optimum quality control and analysis of your complete flexoplate and print production



1 & 2 Blackworth Court
Blackworth Industrial Estate
Highworth, Wiltshire, SN6 7NS
United Kingdom

Tel: +44 (0) 1793-766-355
Fax: +44 (0) 1793-766-356
info@troika-systems.com
www.troika-systems.com

Your authorised FlexoCAM dealer:



The advent of computer controlled exposure systems has allowed the flexo market to advance to levels of print quality unknown a decade ago. With these increases in quality, and the development of new and varied plate materials, and with the higher screen rulings for halftone production, the need for greater quality control is essential. The Troika FlexoCAM enables users to ensure their desired level of accuracy and consistency with the plates is achieved and maintained.

What is FlexoCAM?

FlexoCAM was developed for the label, carton, newspaper and corrugated markets where surface inspection and depth measurement, particularly of halftone dots, is needed.

It is capable of measuring and analysing film, flexo plate film laminations, translucent and opaque Flexo plates/sleeves and printed copy for quality, dot structures and halftone dot readings.

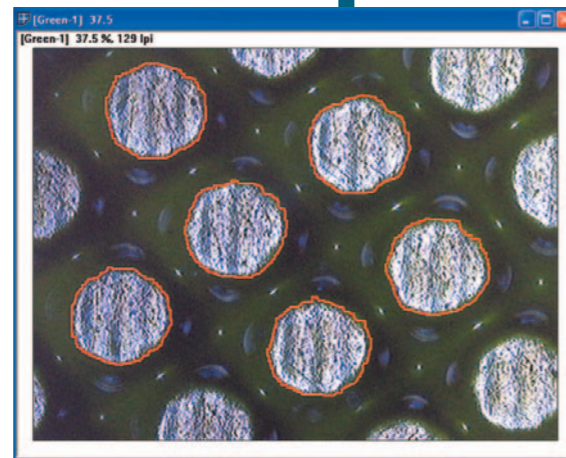
With the Zoom function to vary the magnification for different screen rulings and analysis within the unit, the FlexoCAM is genuinely a unique product.

Key Benefits

- ▶ Accurate dot readings over the full range from highlight to shadow;
- ▶ Portable - limited only by cable length;
- ▶ Flat plate, cylinder and sleeve inspection;
- ▶ Film/LAMs and Printed Copy inspection;
- ▶ Non contact around inspection area;
- ▶ Auto-focus to eliminate operator analysis error;
- ▶ Sighting system for accurate targeting;
- ▶ Computer controlled micron stepped optics for optimum relief measurement;
- ▶ Full colour image on monitor;
- ▶ Depth measurement in microns;
- ▶ Utilises the power of a PC to analyze the results received via USB.

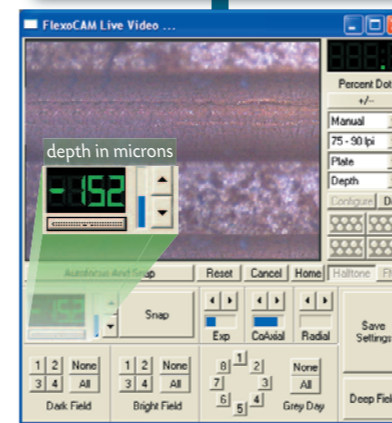
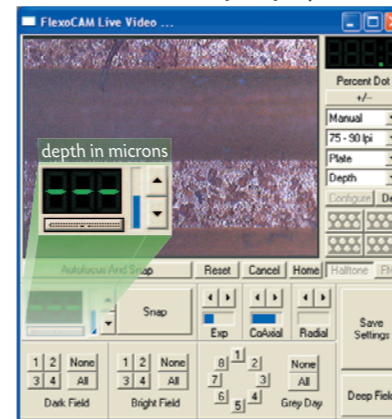
Automatic and Manual Mode

FlexoCAM can be operated in different modes. If due to certain conditions or plate characteristics the FlexoCAM cannot determine the correct dot sizes or illumination, the user can switch to the manual mode, which allows him to adjust the light and/or define the dots by drawing a red circle around it.



Automatic dot recognition and calculation

Manual measurement of relief depth



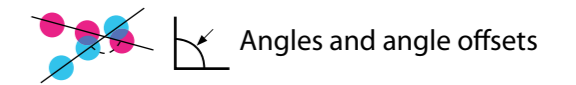
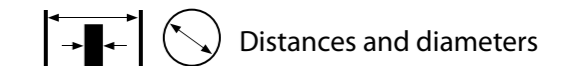
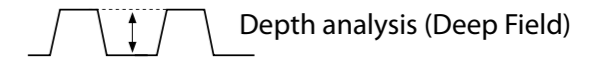
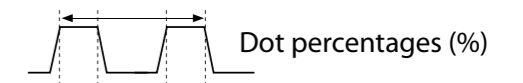
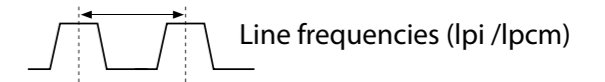
Easy to handle



Manual distance measurement

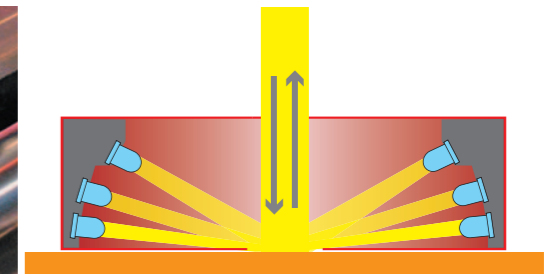
What can be measured?

FlexoCAM enables you to measure:



Radial and Coaxial light source

The FlexoCAM is equipped with a coaxial light and a three-array radial light source, consisting of 16 LEDs, which can be switched on or off individually or in groups to achieve the optimum illumination of the area to be measured. This is especially useful to measure printed copy and rubber sleeves.

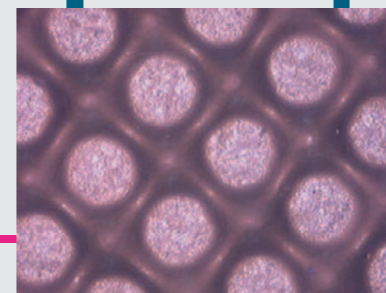
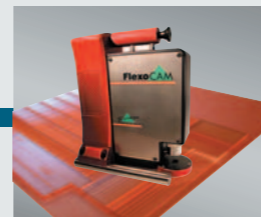


see the dots

Film/Mask



Plate



Sleeve or Cylinder



Printed Media



Remote Analysis

For further investigations the images taken by the FlexoCAM can be transferred to a remote location (i.e. by Email to your plate supplier). They can be stored in their proprietary .fcp format and contain all measured values needed for a remote evaluation. The remote site only needs the FlexoCAM Remote Analyser software, which is available free of charge.

Remote Analysis @ Email